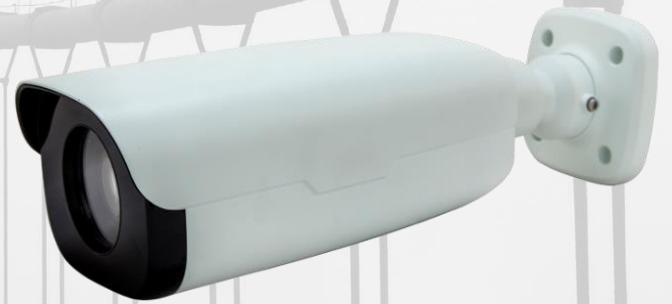




2MP 22x Starlight WDR Network IR Bullet Camera



Key Feature



OPTICS

Optics

- Starlight illumination
- Accurate and fast focusing
- Smart IR, up to 120 m (394 ft) IR distance
- Up to 120 dB WDR(Wide Dynamic)
- Auto day/night functionality
- Optical glass window with higher light transmittance
- IR anti-reflection window to increase the infrared transmittance



COMPRESSION

Compression

- Triple streams
- ROI (Region of Interest)
- 9:16 corridor mode
- Customized OSD



NETWORK

Network

- ONVIF Conformance



STRUCTURE

Structure

- Support PoE power supply
- Wide temperature range: -35°C to 60°C (-31°F to 140°F)
- IP67



Specifications IPC252ERA-X22DUG

Camera

Sensor	1/1.9", 2 megapixel, progressive scan CMOS
Shutter	Auto/Manual, 1/6~1/8000 s
Lens	6.5 ~ 143 mm (22x optical zoom)
Iris	Auto/Manual, F1.5~F3.4
Day/Night	IR-cut filter with auto switch (ICR)
Min. Illumination	Color: 0.001 Lux (F1.5, AGC ON) 0 Lux with IR
S/N	>52dB
WDR	120dB

Video

Max. Resolution	1920 × 1080
Video Compression	H.264,MJPEG
Frame Rate	1080P (1920*1080) 60 fps
9:16 Corridor Mode	Supported
ROI(Region of Interest)	Supported
Video Streaming	Triple
OSD	Up to 8 OSDs
Privacy Mask	Supported

Storage

Edge Storage	Micro SD, up to 128GB
--------------	-----------------------

Audio

Audio Compression	G.711
Two-way audio	Supported

Network

Protocols	L2TP,IPv4,IGMP,ICMP,ARP,TCP,UDP,DHCP,PPPoE,RTP,RTSP,Qos,NTP,FTP,HTTP,SNMP,SIP
Compatible Integration	ONVIF, API

Interface

Audio I/O	Audio cable
	Input: impedance 35 kΩ; amplitude 2 V [p-p]
	Output: impedance 600 Ω; amplitude 2 V [p-p]
Alarm I/O	2 / 1
Video Output	1 BNC, impedance 75 Ω; amplitude 1 V [p-p]
Serial Port	1 RS485 (support Pelco-D/P)
Network	100M Base-FX SFP + 100M Base-TX Ethernet

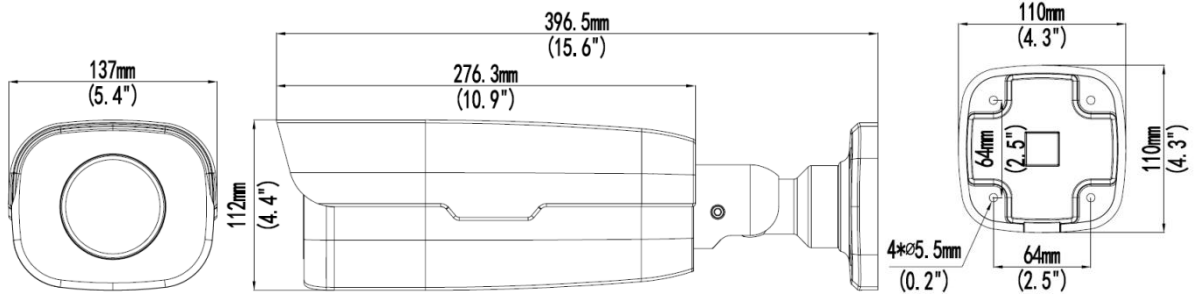
General

Power	24 V AC ±25%
	Power consumption: 7.5W~21W
Dimensions (L × W × H)	396.5 × 137 × 112mm (15.6" × 5.4" × 4.4")
Weight	3.7 kg (8.2 lb)
Working Environment	-40°C ~ +60°C (-40°F ~ 140°F), Humidity ≤ 90% RH(non-condensing)
Ingress Protection	IP67





Dimensions



Accessories

Installation mode	Accessories	Description
Wall mount	\	Mounting pedestal is included in the Product package
Ceiling mount	\	Mounting pedestal is included in the Product package
Rail mount	TR-UP06-A-IN	For outdoor rail installation
Pole mount	TR-UP06-A-IN	For outdoor pole installation